



502 LABEL PRINTER

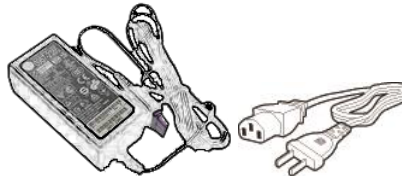
Quick Setup and Installation Guide

For more detailed information, please refer to the **User Guide** installed on your PC.

Unpack:



- 4 aerosol absorbing pads



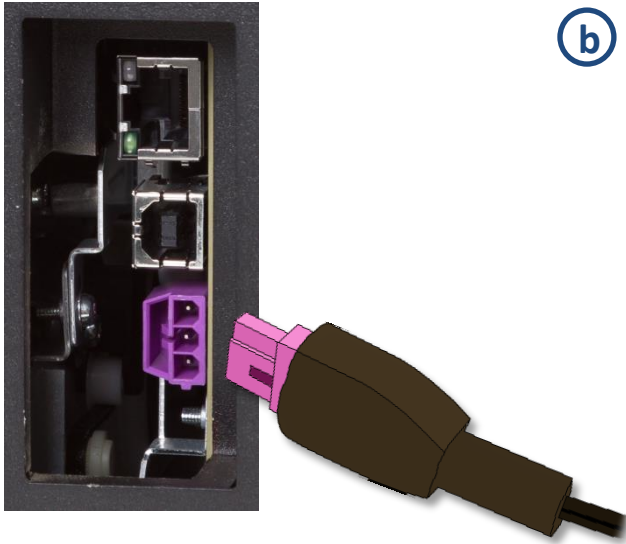
F502 only – Input Hopper and thumb screws

1 Remove 3 shipping tapes



2 Connect Power

a



b



3 Install Ink Cartridges

- a Open Ink Cartridge Access Door
- b Remove cartridges from packaging
- c Press each cartridge into the correct slot until it clicks
- d Left to right: **C – M – Y – K**
Close Ink Cartridge Access Door



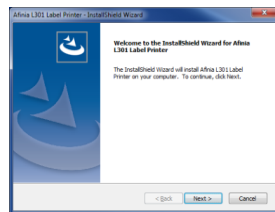
4 Install Printer (USB connection)

For network connection, please see User Manual

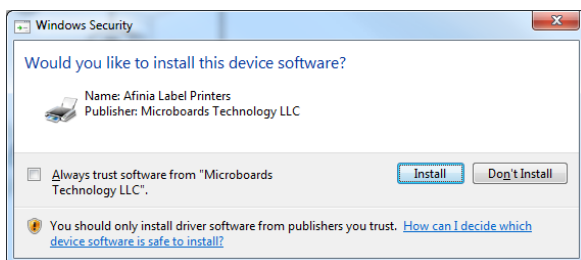
- a Download Installer to your computer from

<http://afinialabel.com/502info>

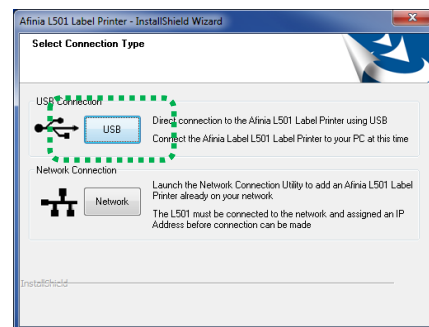
- b Run Installer on your computer, follow all steps



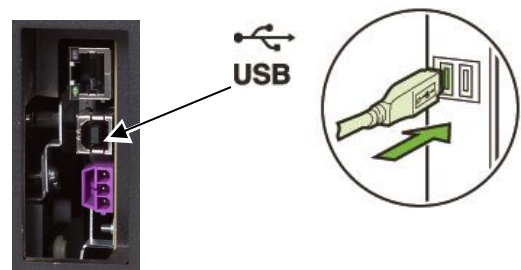
- c Click **Install** (will see this 3 times)



- d Click **USB** button



- e Connect printer to PC



5

Load Media – L502

- (a)** Loosen Mandrel Knob and remove plate



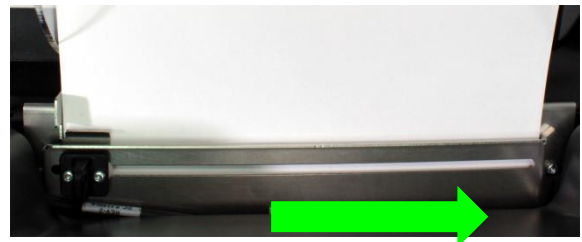
- (b)** Slide roll onto mandrel up to the fixed plate



- (c)** Replace removable plate and tighten mandrel knob



- (d)** Insert stock into input slot under label guide and against right side



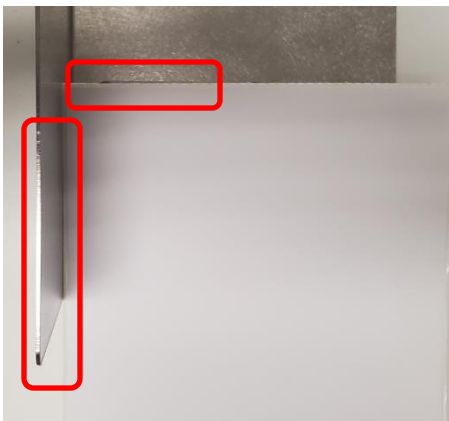
Push stock in until auto-feed begins, then adjust Paper Guide

Load Media – F502

- (a)** Attach the input hopper



- (b)** Place fanfold stock against fixed guide plates



- (c)** Insert the media into the printer



- (d)** Slide adjustable guide to the edge of the stock



Troubleshooting

If the 502 Label Printer isn't printing.:

- Check for error messages on the control panel
- Verify selected media matches loaded media type
- Verify job sent to correct printer



If stock won't load:

- Wait until printer is initialized or idle; media LED will be blinking once a second when ready
- If media LED is blinking rapidly, press **Unload** button and try again
- Unwind more slack from label roll and try again



If the print position on the label is not correct:

- See “Adjusting Alignment for Printing” on page 24 of the User’s Manual
- Verify you have the correct label size selected

If the label size you need isn't available:

- See “Creating Custom Label Sizes” on page 26 of the User’s Manual

For technical questions or support issues, contact Afinia Label Technical Support:

PH: 952-556-1608

support@afinia.com

www.afinialabel.com/support

Please have the Serial Number of your Afinia Label 502 Label Printer available when contacting Technical Support.